



International Society  
for Traumatic Stress Studies

# 38<sup>th</sup> ANNUAL MEETING

November 9-12, 2022  
Atlanta Marriott Marquis

**#ISTSS2022**



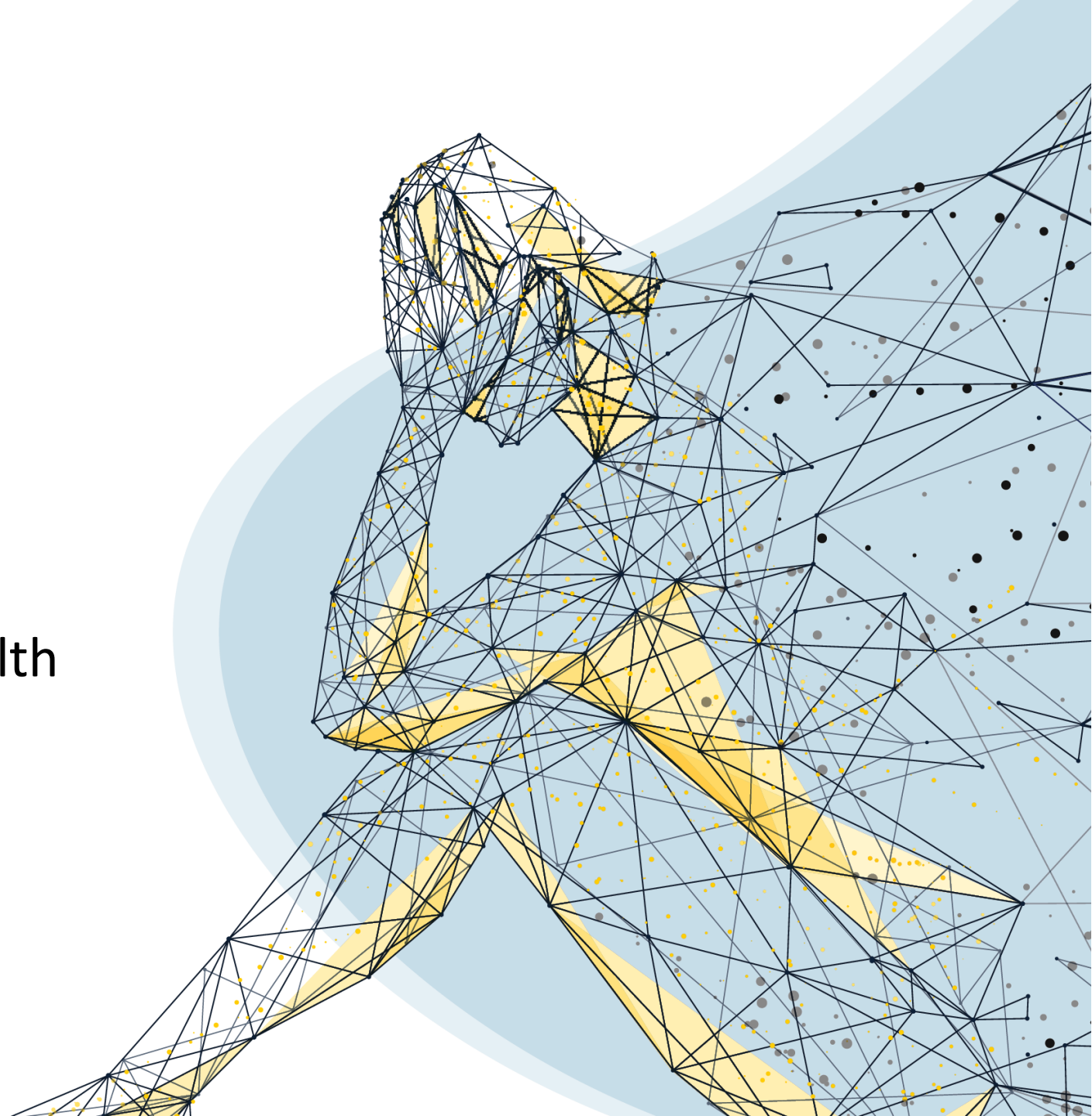
# How and Where to Share Data

Bryce Hruska

Assistant Professor of Public Health

Syracuse University

[bjhruska@syr.edu](mailto:bjhruska@syr.edu)



# Continuing Medical Education Commercial Disclosure

Amedco, our CME provider, asks all individuals involved in the development and presentation of Continuing Medical Education (CME) activities to disclose all relationships with commercial interests. This information is disclosed to CME activity participants. Amedco has procedures to resolve apparent conflicts of interest. In addition, presenters are asked to disclose when any discussion of unapproved use of pharmaceuticals and devices is being discussed.

I, Bryce Hruska, have no commercial relationships to disclose.



# Why Share Data?

# Funding Mandates

## Final NIH Policy for Data Management and Sharing

Notice Number:

NOT-OD-21-013

Effective Date:

January 25, 2023

“...This Policy established the requirements of submission of Data Management and Sharing Plans and compliance with NIH Institute, Center, or Office (ICO)-approved plans.”

**Starting in January 2023, all applications for research projects that generate scientific data will be required to include a plan and budget describing how data will be managed and shared**



# Funding Mandates (cont.)

## New elements in Horizon Europe

- **European Innovation Council:** Support for innovations with potential breakthrough and disruptive nature with scale-up potential that may be too risky for private investors. This is 70% of the budget earmarked for SMEs.
- **Missions:** Sets of measures to achieve bold, inspirational and measurable goals within a set timeframe. There are 5 main mission areas as part of Horizon Europe.
- **Open science policy:** Mandatory open access to publications and open science principles are applied throughout the programme  
[Factsheet: Open science in Horizon Europe](#) EN | ...
- **New approach to partnerships:** Objective-driven and more ambitious partnerships with industry in support of EU policy objectives

**Horizon Europe  
greatly expanded  
open science  
requirements for  
funded research  
projects**

# Publisher Requirements/Encouragement

## European Journal of Psychotraumatology

**“...Authors are required to make data and materials supporting the results or analyses presented in their paper freely available...If the data cannot be made open, we recommend it is still preserved in a FAIR-compliant repository.**

Psychological Trauma: Theory, Research, Practice, and Policy

**“Articles are eligible for open science badges recognizing publicly available data, materials, and/or preregistration plans and analyses.”**



**“[JTS] requires, as a condition for publication, that the data supporting the results in a paper will be archived in an appropriate public repository. Authors are required to provide a data availability statement, including a link to the repository they have used, and to cite the data they have shared...”**

# Publishing Opportunities



Taylor & Francis  
an **informa** business

Data notes are a short peer-reviewed **article type** that concisely describe **research data** stored in a **repository**. They increase the discoverability and transparency of your research, helping to comply with funder mandates on data sharing and make data FAIR (findable, accessible, interoperable and reusable).

**Publishers are offering new types of citable publications that provide the opportunity to describe and share data you have collected**

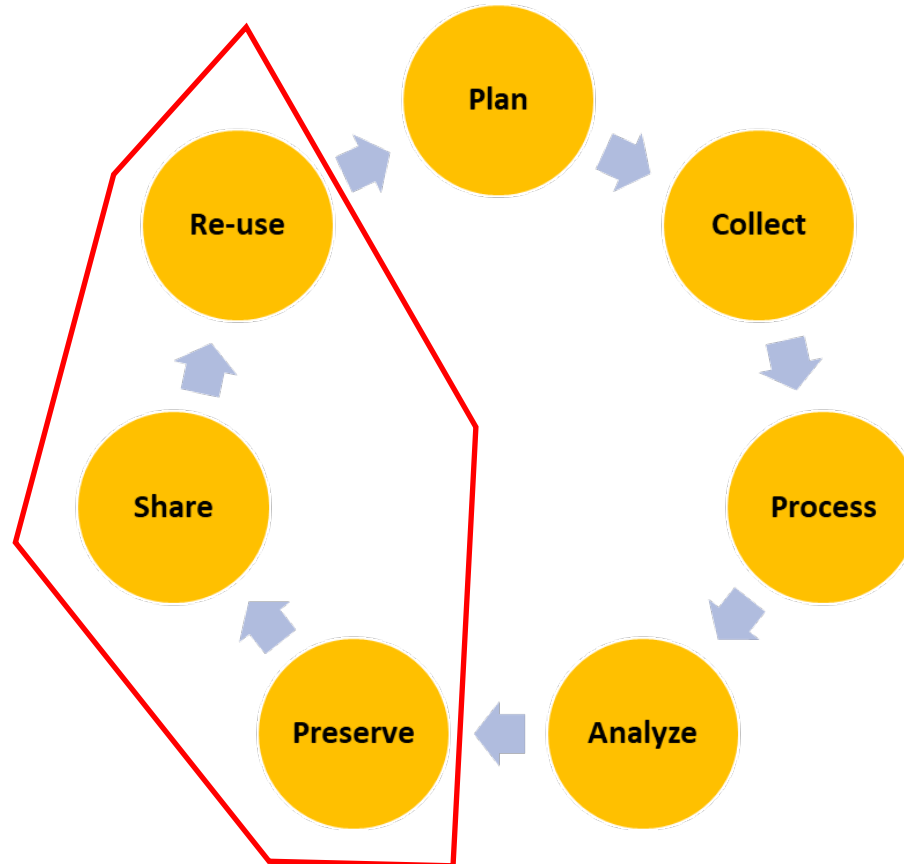


# How to Share Data?

# 1) Data Repositories

- Storage spaces that provide researchers with a place to deposit and share the data associated with their research

Data repositories provide way to preserve your work, share it with other researchers, and increase its re-use to further science



Most research projects end with data analysis and publication

# Subject-Specific

**Psych**Archives



NATIONAL DATA ARCHIVE ON  
CHILD ABUSE AND NEGLECT

**The Qualitative Data  
Repository**

# Cross Disciplinary



ICPSR

# Academic



**UNSW**  
SYDNEY

UNSW Data Archive

**eCommons**

Open scholarship at Cornell

**Boston University Libraries**

**OpenBU**

# Government Sponsored



Australian Research Data Commons

NIMH Data Archive



NDA

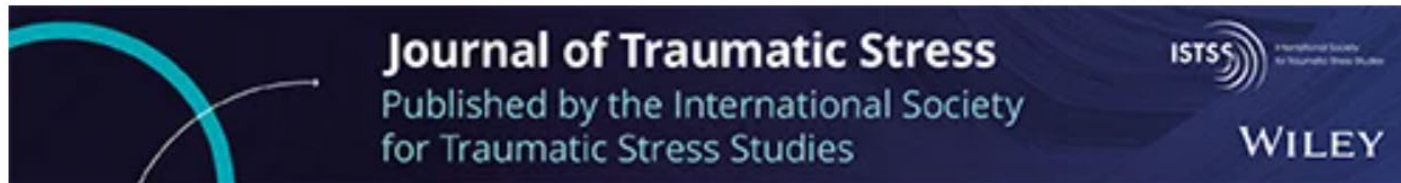


data.europa.eu



## 2) Unique Persistent Identifiers

- **Sequence of letters and numbers that are one-of-a-kind**
- Digital object identifiers (DOIs) are one of the most common



RESEARCH ARTICLE | Open Access |

### Examining well-being in posttraumatic stress disorder treatment: An explorative study

Mirjam Radstaak , Laura Hüning, Sanne Lamers, Ernst T. Bohlmeijer

First published: 19 February 2022 | <https://doi.org/10.1002/jts.22798>

217.5KB

Public

0


...

# Incorporating Community-Level Risk Factors into Traumatic Stress Research

Contributors: [Bryce Hruska](#), [maria pacella](#), [Ivan Castro](#), Richard L. George, Douglas L. Delahanty

Date created: 2020-02-18 04:00 PM | Last Updated: 2022-01-13 10:05 AM

Identifier: DOI 10.17605/OSF.IO/M2SAV

Category:  Methods and Measures

Description: *This project contains R scripts that can be used to create census tract-level measures of community socioeconomic conditions (Neighborhood Deprivation Index: Messer et al., 2006) and social spatial polarization (Index of Concentration at the Extremes: Krieger et al., 2016). Users are referred to Hruska et al. (2020) for more information. Questions pertaining to the materials in this project can be sent to [bjhruska@syr.edu](mailto:bjhruska@syr.edu)*

# 3) Metadata

- **Information that describes your data**
- **At a minimum**: A title, list of authors, and brief description of your data are required in most repositories

## Without appropriate metadata, data-sharing mandates are pointless



**Funders and investigators must demand appropriate metadata standards to take data from foul to FAIR.**

**Mark A. Musen**

Professor of Biomedical  
Informatics and Biomedical Data  
Science at Stanford University

**Be sure to include a codebook and any supporting materials needed to understand your dataset and its structure**

# Recap

- **How to share data?**
  - Place it in a data repository
  - Attach a unique persistent identifier (e.g., DOI) to it
  - Include sufficient meta-data to make it re-usable

**Selecting an appropriate data repository is key**

# Where to Share Data?



# Data Repository Considerations

- Most data repositories support DOI creation/attachment and allow for uploading documentation containing meta-data
- **1) Sustainability**
- **2) Deposit options available (free vs. paid)**
- **3) Visibility**
- **4) Restricted access capabilities**

# Open Science Framework



- Non-profit founded in 2013 and supported by grants from federal agencies, private foundations, and commercial entities
- Free: Limited to 5GB private / 50GB public storage space
- Allows for generation of unique URL in addition to DOI
- Restricted access dependent upon user
- **Emphasizes: Serving as a “home base” for projects across the research data life cycle**

# Inter-university Consortium for Political and Social Research



- International consortium at the University of Michigan founded in 1962 and supported by membership dues, grants, and paid workshop offerings
- Offers 2 deposit options:
  - Free self-deposit for via openICPSR
  - Fee-based that includes curation services
- Materials are discoverable in online public access catalogs
- Restricted access services available -- curated deposit only
- **Emphasizes: Support and education on data preparation and sharing**

# Figshare



- Commercial company founded in 2011 and owned by Digital Science, the company that created Altmetrics
- Offers 2 ways deposit:
  - Self-deposit for free (20GB)
  - Self-deposit for fee via Figshare+ for larger projects
- Materials are discoverable via Google, Data Citation Index, DataCite, DataMed, Dimensions, etc.
- Restricted access services available – institutional members only
- **Emphasizes: Discoverability of deposited materials**

# Dataverse Project



- Sponsored by the Institute for Quantitative Social Science at Harvard University beginning in 2007 (formerly Virtual Data Center – 1997-2006) and funded by Harvard University and grant support
- Offers 2 deposit options:
  - Self-deposit for free using Harvard's affiliated repository (Harvard Dataverse; 1TB)
  - Self-deposit for free at your institution if it has created a repository using the Dataverse software
- Materials are discoverable via Google and other repositories, data exploration tools, etc.
- Restricted access services available
- **Emphasizes: Adoption of its software by academic institutions**

# Resources

- **Sherpa/Juliet**
  - <https://v2.sherpa.ac.uk/juliet/>
  - Database of funder policies regarding data sharing
- **FAIRsharing.org**
  - <https://fairsharing.org/>
  - Hub for information on journal/society/organization data sharing standards, policies, repositories, etc.
- **Registry of Research Data Repositories (Re3data)**
  - <https://www.re3data.org/>
  - Database of repositories
  - Over 1,500 listed
- **Open Science Framework**
  - <https://osf.io/>
- **Inter-university Consortium for Political and Social Research**
  - <https://www.icpsr.umich.edu/> .
- **Figshare**
  - <https://figshare.com/>
- **Dataverse Project**
  - <https://dataverse.org/>



# Questions?

- Bryce Hruska ([bjhruska@syr.edu](mailto:bjhruska@syr.edu))
- Please visit the Global Collaboration on Traumatic Stress's website for more information and FAIR data resources (<https://www.global-psychotrauma.net/fair>)

